

—  
BLOQ

creative  
carpet tiles



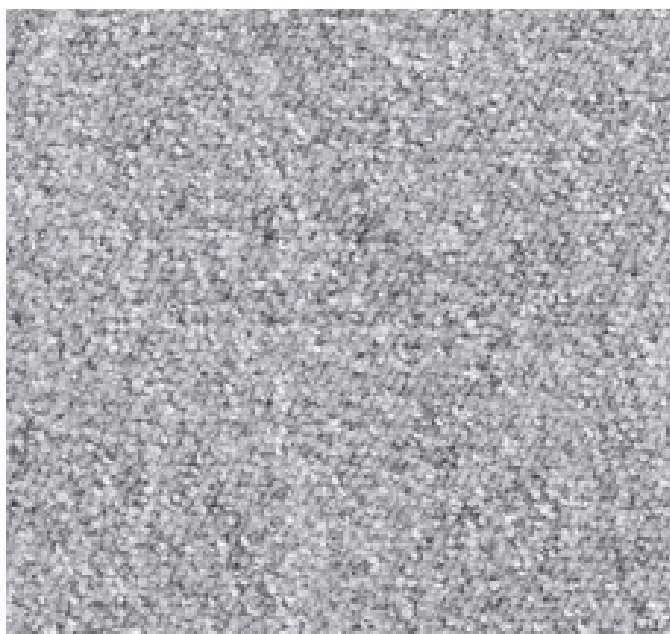
THE WORKPLACE  
KEY



## LIGHT REFLECTANCE VALUES

**Light Reflectance Value (LRV)** is a scale that measures visible and usable light reflected from an illuminated surface. The percentage identifies how much light a colour reflects or absorbs. 0% reflects no visible light, 100% reflects all light.

COLOUR	LRV av	L
<b>523</b>	3,63	22,41
<b>825</b>	11,06	39,69
<b>912</b>	20,29	52,17
<b>933</b>	4,77	26,08
<b>938</b>	7,43	32,77
<b>952</b>	2,84	19,41



**KEY 912 FOG**



**KEY 938 BASALT**



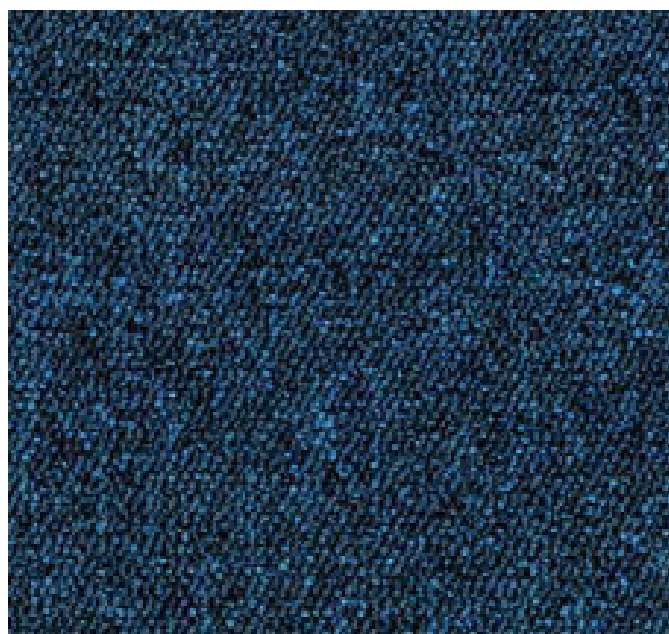
**KEY 933 METAL**



**KEY 952 ONYX**



**KEY 825 SAND**



**KEY 523 NAVY**

# BLOQ

creative  
carpet tiles



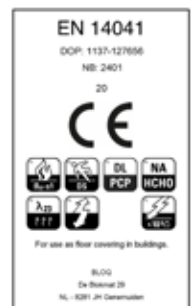
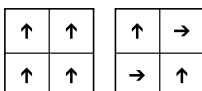
THE BASIC  
KEY

## SPECIFICATIONS

<b>TYPE OF MANUFACTURE</b>	Tufted Loop Pile 1/10"
	ISO 2424
<b>PILE FIBER COMPOSITION</b>	100% Polyamide 6
	ISO 2424 Solution Dyed Nylon made by Aquafil
<b>SECONDARY BACKING</b>	Bitback, Modified Bitumen
	ISO 2424 70% Recycled Content
<b>DIMENSION</b>	50 x 50 cm
	EN ISO 24342
<b>PILE WEIGHT</b>	550 gr/m <sup>2</sup>
	ISO 8543
<b>SURFACE PILE WEIGHT</b>	380 g/m <sup>2</sup>
	ISO 8543
<b>TOTAL WEIGHT</b>	4 300 g/m <sup>2</sup>
	ISO 8543
<b>TOTAL THICKNESS</b>	5.5 mm
	ISO 1765
<b>PILE HEIGHT</b>	3 mm
	ISO 1766
<b>PILE DENSITY</b>	0.113 g/m <sup>3</sup>
	ISO 8543
<b>NUMBER OF TUFTS</b>	171 000 /m <sup>2</sup>
	ISO 1763
<b>DIMENSIONAL STABILITY</b>	≤ 0.2%
	ISO 2551
<b>NUMBER OF COLOURS</b>	6
<b>PACKAGING</b>	Box: 20 tiles / 5 m <sup>2</sup> Pallet: 200 m <sup>2</sup>

## PERFORMANCE

<b>CLASSIFICATION</b>	33
	EN 1307
<b>LUXURY RATING</b>	LC1
	EN 1307
<b>CASTOR CHAIR RATING</b>	A: Intensive use
	EN 985
<b>FIRE CLASSIFICATION</b>	B <sub>f</sub> -s1
	EN 13501-1
<b>IMPACT SOUND INSULATION</b>	ΔL <sub>w</sub> : 23 dB
	EN ISO 10140-3
<b>SOUND ABSORPTION</b>	Frequency Hz 125 250 500 1000 2000 4000
	EN ISO 354 α <sub>s</sub> 0.00 0.03 0.05 0.15 0.25 0.30
<b>NOISE REDUCTION</b>	α <sub>w</sub> : 0.15
	EN ISO 354
<b>PERMANENT ANTISTATIC</b>	≤ 2 kV
	ISO 6356
<b>TRANSVERSAL RESISTANCE</b>	≤ 1 X 10 <sup>9</sup> Ohm
	ISO 10965
<b>THERMAL RESISTANCE</b>	0.064 m <sup>2</sup> K/W
	ISO 8302
<b>COLOUR FASTNESS TO LIGHT</b>	≥ 7
	EN ISO 105-B02
<b>COLOUR FASTNESS TO WATER</b>	≥ 4
	EN ISO 105-E01
<b>RUBBING FASTNESS</b>	≥ 4
	EN ISO 105-X12
<b>GUT N° PRODIS</b>	in progress



08/02/2022

All rights reserved to alter technical specifications.